

The background of the slide features a close-up, shallow depth-of-field photograph of several pushpins. The pushpins are arranged in a way that their shadows are cast onto the surface below them, creating a pattern of dark, circular shapes. The lighting is soft, highlighting the metallic texture of the pushpin heads and stems.

# e-PT Managing PT Data

e-Tool for evidence based corrective actions

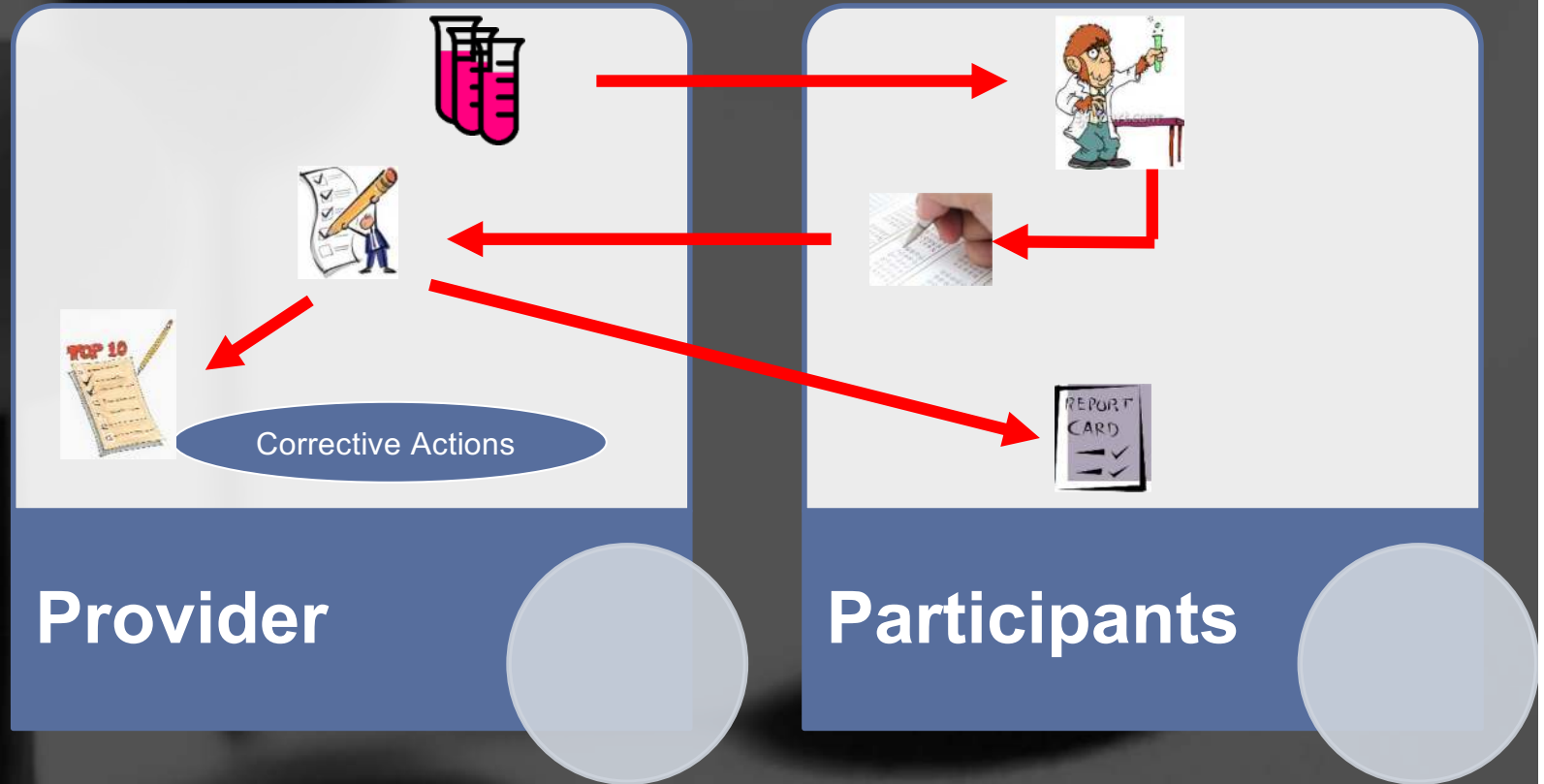


# Proficiency Testing

- What is Proficiency Testing?
- How PT helps in monitoring quality of laboratory testing
- Type PT Program
  - Provided by external agency
  - In-house PT Program
- Managing PT Response and Corrective Action
  - Using tools which will help in providing trend help in identifying corrective

**Basic Information  
You already know**

# PT Process



## Process of Improvement



# PT is a Data Driven Program

- PT Data helps in measuring participant performance
- Help to measure gap in testing quality
- Help laboratories to move towards accreditation
- Help in identifying quality improvement initiatives
- Understanding quality testing form participating laboratories
- Managing PT Data
  - Microsoft Excel Data Management
  - PT Data Management Software (ex. e-PT)

# e-PT : How it will help me?

- Reduce turnaround time for PT
  - Web based system reduce postal delay in getting panel response to PT Provider
  - It helps PT participant for receiving response result and corrective actions on time
  - Identifying corrective action
    - Identify corrective actions for PT Provider to improve quality of testing
  - Easy reporting analysis and data management for PT Program

# e-PT Users



## Provider

- Add participant
- Manage Shipment
- Evaluate Responses
- Provide feedback to participants



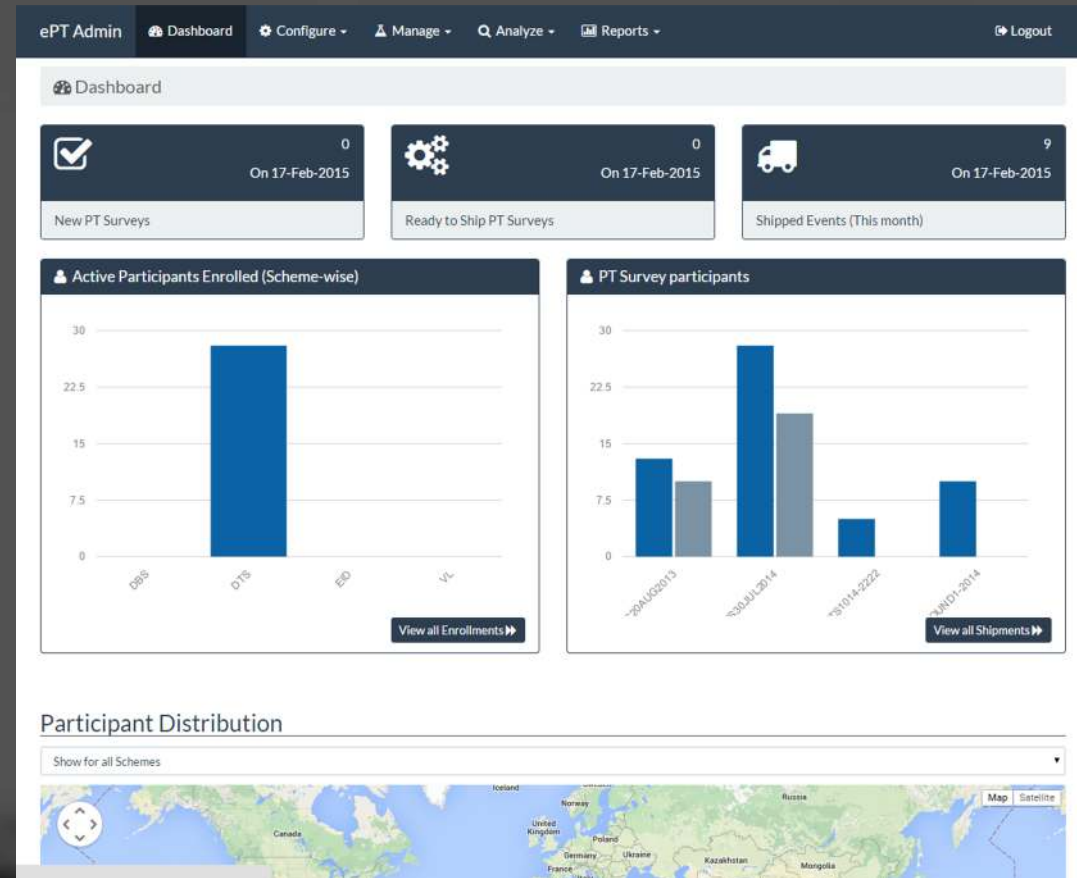
## Participant

- Enter Test Result
- View feedback
- View PT performance

# PT Provider Functionality



Provider

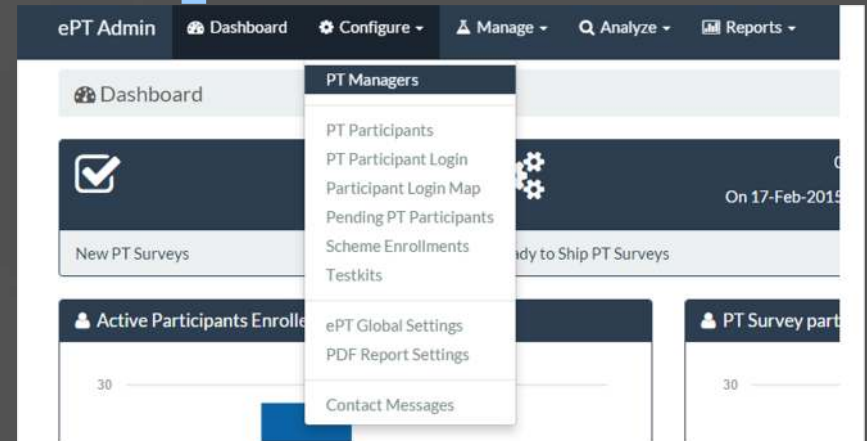


# e-PT : PT Provider<sub>1</sub>

- Features:

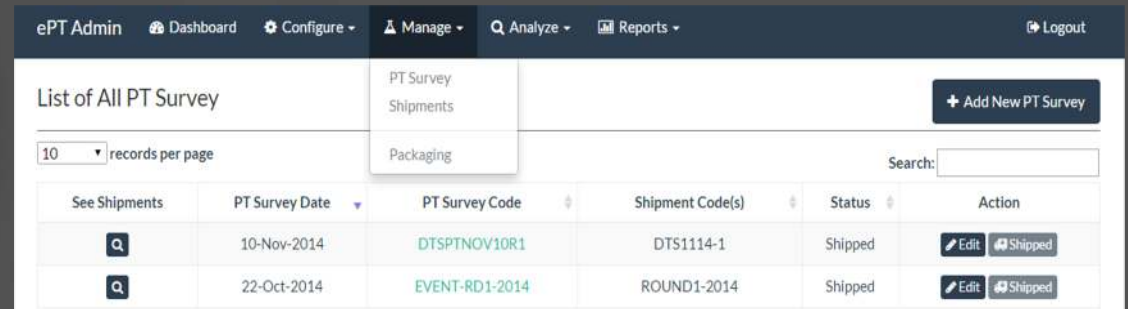
- Configuring/Admin System

- Manage PT Participating Agencies
- Manage login Participating Agencies
- Configure Reports
- Manage administrative access for e-PT system
- Configure report, GIS and other features





# e-PT : PT Provider<sub>2</sub>



ePT Admin Dashboard Configure Manage Analyze Reports Logout

List of All PT Survey

10 records per page

Search:

See Shipments	PT Survey Date	PT Survey Code	Shipment Code(s)	Status	Action
	10-Nov-2014	DTSPTNOV10R1	DTS1114-1	Shipped	
	22-Oct-2014	EVENT-RD1-2014	ROUND1-2014	Shipped	

PT Survey  
Shipments  
Packaging

+ Add New PT Survey

- Features:

- Manage Shipments/Panel

- Manage PT Survey
- Manage testing panel in PT Survey
- Manage participants for given panel
- Add/Modify reference result for a given panel
- Ship the panel to participant

# e-PT : PT Provider<sub>3</sub>

10 records per page

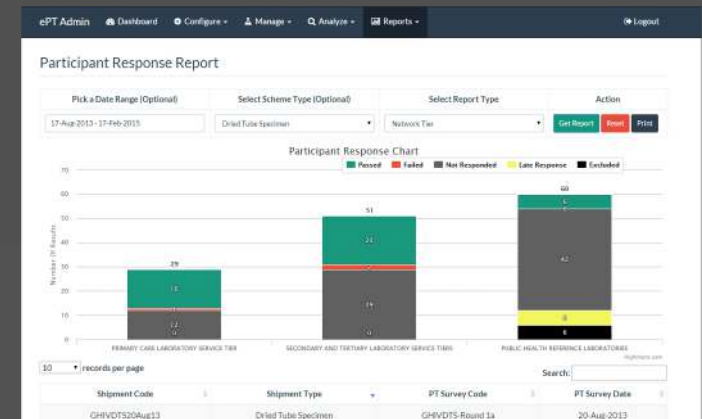
Search:

PT Survey Date	PT Survey Code	Shipment Code(s)	Status	Action
10-Nov-2014	DTSPTNOV10R1	DTS1114-1	Shipped	<a href="#">View</a>
22-Oct-2014	EVENT-RD1-2014	ROUND1-2014	Shipped	<a href="#">View</a>
07-Oct-2014	OCT01	DTS1014-3	Shipped	<a href="#">View</a>
15-Sep-2014	SFP015	DTS1014-2222	Shipped	<a href="#">View</a>

- Features:
  - Evaluate Response
    - Evaluate participating response
    - Reviewing response rate/performance
    - Create response report for PT participants
    - View performance report for a given shipment
    - Edit and modify participant responses if needed

# e-PT : PT Provider<sub>3</sub>

- Features:
  - Reports
    - Create Reports for Provider
      - Participants Reports
      - Corrective Actions
      - Shipment Response Report
      - Shipment Reports
      - Kit Uses Report
      - Download Data for Analysis



# PT Participant Functionality



## Participants

The screenshot displays the e-PT website interface. At the top, there is a navigation bar with the e-PT logo, a home icon, and buttons for "Register as a PT Participant" and "Participant Login". Below the navigation bar is a five-step instructional process for performing a test:

- 1** Using plastic pipette, add 7 drops of buffer to each tube
- 2** Tap the tubes to mix well
- 3** Leave tubes standing upright at room temperature overnight.
- 4** The next day, tap tubes, mix and test according to national algorithm
- 5** Record the results on the Results submission form or ePT website

Below the instructions, the main content area is divided into three sections:

- WELCOME TO [ e-PT ] PROGRAM!**  
Proficiency Testing enable laboratories to assess their performance in conducting test methods within their own laboratories when their data are compared against other laboratories that participate in the same program.
- WHAT CAN WE DO FOR YOU THROUGH PT PROGRAM?**
  - TRAINING**
    - Panel preparation
    - e-pt database training: results entry and validation, reports viewing and reports download
    - Corrective actions
  - TECHNICAL ASSISTANCE**
    - Panel preparation assistance
    - Results entry and validation, reports viewing and reports download assistance (enriches technical assistance and on-site technical assistance)
- PUBLICATIONS**
  - FTQI- Reporting Guidelines - Draft
  - FTQI- Reporting Guidelines - Presentation
  - FTQI- Reporting Tool - User Guide
  - Baseline Assessment Tool - Draft
  - Handbook for Improving HIV Testing and Counseling
  - Fareh, B. S., J. Anyanwu, et al. (2010). Dried tube specimens: a simple and cost-effective method for preparation of HIV proficiency testing source and quality

# e-PT: PT Participants<sub>1</sub>

The screenshot displays the e-PT web application interface. At the top, there is a navigation bar with 'e-PT' and 'LOGOUT' buttons. Below this, a user information section shows 'Participant: Your Name - Participant Demo User' and 'Your Email: demo@demo.com'. The main content area is divided into three sections: 'OVERVIEW', 'CURRENT SCHEMES', and 'DEFAULTED SCHEMES'. Each section contains a table with columns for 'Year', 'Subpanel Type', 'Total Schemes', 'Weekly Responses', and 'Responses Last 7 Days'. The 'OVERVIEW' table shows data for 2014 and 2015. The 'CURRENT SCHEMES' table shows data for 2014 and 2015. The 'DEFAULTED SCHEMES' table shows data for 2014 and 2015.

Year	Subpanel Type	Total Schemes	Weekly Responses	Responses Last 7 Days
2014	PTC	140	80	100
2015	PTC	80	90	0

Year	Subpanel Type	Total Schemes	Weekly Responses	Responses Last 7 Days
2014	PTC	140	80	100
2015	PTC	80	90	0

Year	Subpanel Type	Total Schemes	Weekly Responses	Responses Last 7 Days
2014	PTC	140	80	100
2015	PTC	80	90	0

- Enter PT Response for participant/s
- View/download PT Results
- View/download Summary Results for a given panel

# e-PT: Other Functionalities

- Registering PT Participants Request online
- Reminder for Participant not responded
- Extract Data to Excel Sheet for review and analysis
- Feedback mechanism via web portal

# e-PT: Supported Schemes

- Scheme Implemented

- DTS PT

- EID PT

- VL PT

- EID PT

- TB PT



# Login information - ePT

- Website for login as PT Provider
  - [eqapt.com/admin](http://eqapt.com/admin)  
User: `demoadmin@gmail.com`  
Password: `demopassword#1`
- Website to login as PT Participant
  - [eqapt.com](http://eqapt.com)  
User: `demouser@gmail.com`  
Password: `demopassword#1`

This is a demo system used for testing and demo PT software. Each country will have its own e-PT application



# Laboratory Quality Improvement



Questions?